

# Blogging The Battle

## Wildfire & Extreme Weather Tracking Resources

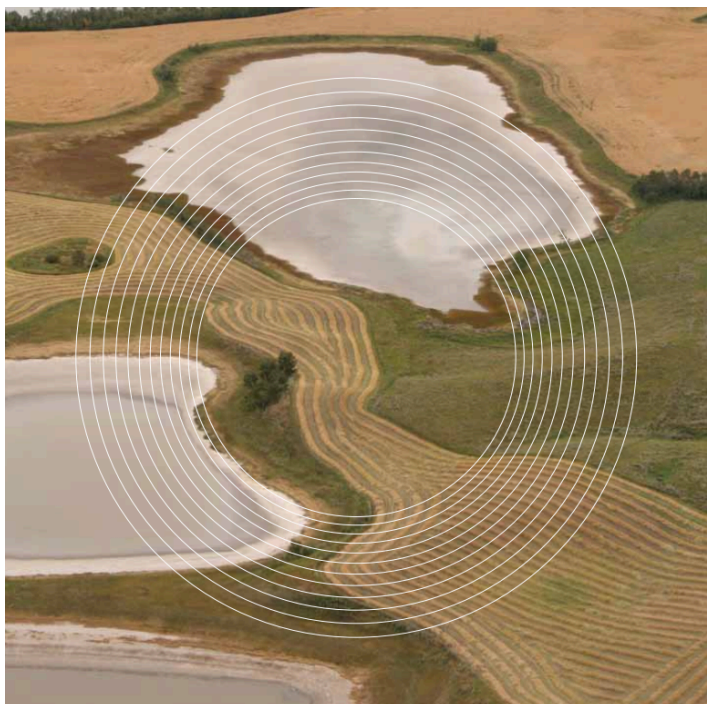
June 2, 2025

By Victoria Colyn, Battle River Watershed Alliance

Across the globe, wildfires and extreme weather events are becoming more frequent and unpredictable. The best way to combat the risks associated with these events is to stay informed and stay prepared.

Our main concerns within the Battle River and Sounding Creek Watersheds are:

- Since 1950, Alberta's climate has been warming, and winter temperatures have increased 0.5-1°C per decade. The annual frequency of extreme heat days is greatest in areas south of Consort.
- Within the watershed, men show a higher rate of heat-related illnesses. The male prevalence rate is around 14-16 per 100,000 people, while the female rate falls in the 6-8 per 100,000 range.
- Temperature increases may extend the growing season and extend the first freeze period by about two weeks.
- Extreme precipitation events (exceeding 25 mm per day) have occurred most frequently in areas west of Tofield and Camrose. The number of days with precipitation is projected to increase by 50% within Alberta.



- Since 1961, Plant Hardiness Index scores have increased by 1 - 2 points, indicating that winter temperatures have become milder. Some native species and crops may struggle to adapt to this shift, but invasive species are likely to spread more easily.
- Monitoring of dissolved oxygen, total phosphorus, total nitrogen, and pH in watershed tributaries revealed values that exceed guidelines for healthy aquatic ecosystems.
- The main water bodies that have historically had cyanobacteria advisories are Pigeon Lake, Battle Lake, and Little Beaver Lake, while the Battle River at Riverdale Mini-Park has seen advisories more recently.

**Here is a collection of resources to help you stay up to date with current wildfire and weather news:**

*What are the current wildfire risks?*  
Check the wildfire status in your area with the [Government of Alberta website](#) and [interactive map](#). And where there's fire there's smoke, so take a look at the Canada wide [Smoke Forecast](#) and [PurpleAir](#) air quality map. Help prevent wildfires by observing fires bans and advisories [Alberta Fire Bans](#)

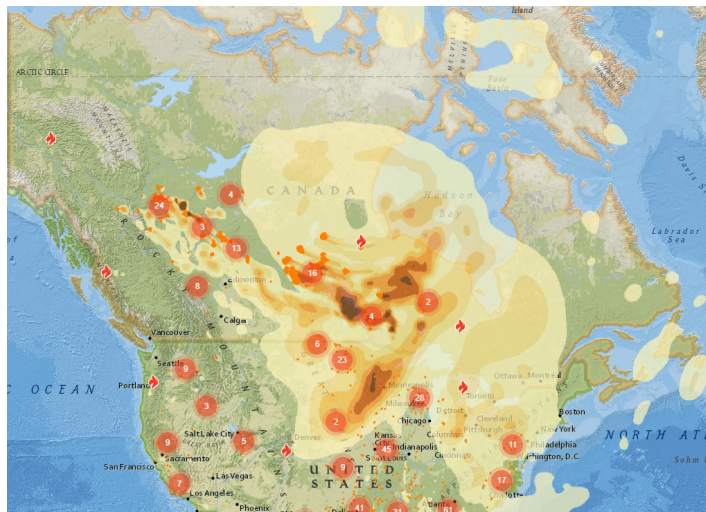


Photo from FireSmoke.ca



*What are the current weather hazards?*  
Heat waves, cold snaps, and everything in between. Visit the [Government of Canada Weather Alert map](#) to keep yourself safe and plan your days accordingly. Download the [WeatherCAN](#) app to stay in the loop while on the go.



What are the current risks to water quality and quantity?

Stop and look at the provincial

[Blue-Green Algae Health](#)

[Advisories](#) before taking a dip.

Monitor for water shortages and

high streamflows on the [Alberta](#)

[River Basins map](#).

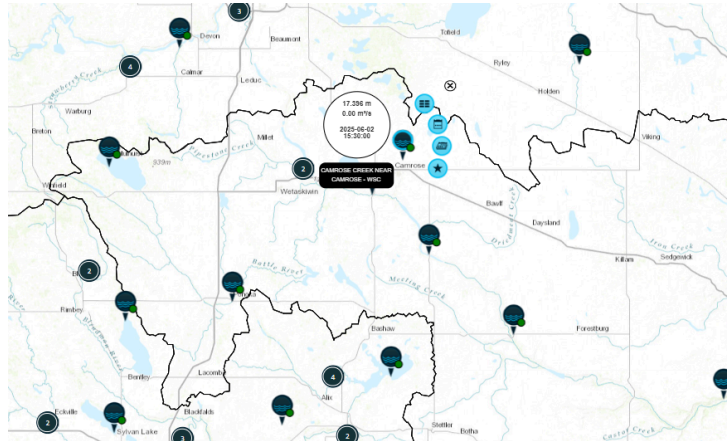
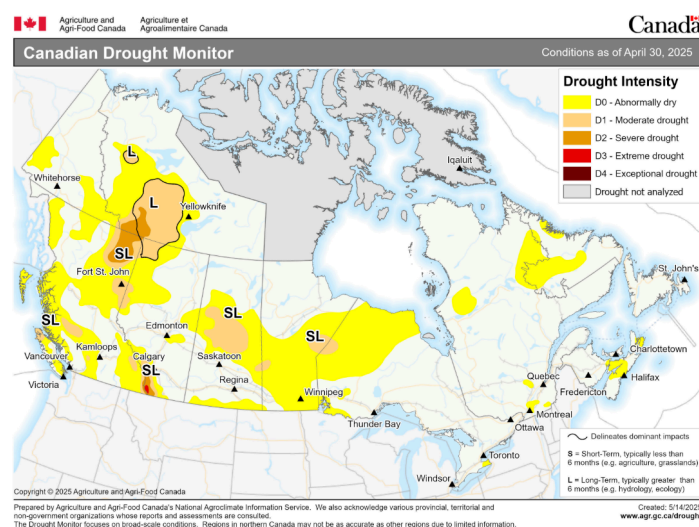


Photo from Rivers.Alberta.ca



How can I monitor the impacts of weather conditions on agriculture?

Get updates on drought conditions with the [Agriculture and Agri-Food Canada map](#). For longer term information on soil moisture, take a look at the [Alberta Climate and Atlas Maps](#).

What do I do in the event of extreme winds?

Know what to do when it matters most. Take a read from the Government of Alberta [fact sheets](#) to know where it is best to take shelter in the event of dangerous winds or storms.



Photo from Global News

Using this toolkit of resources, you can find some peace of mind. Refer to our [State of the Watershed Report](#) to learn more statistics and gain a better understanding of the risks to our local communities.