

# WASTE IN OUR WATERSHED

## WOW Wetaskiwin Tour

### Overview for Teachers

#### OVERVIEW

WOW (Waste in Our Watershed) is an environmental education program offered free to schools by the Battle River Watershed Alliance (BRWA) with support from the City of Wetaskiwin and Aquatera. The program includes a guide for teachers, class field trip led by BRWA, and extension activities for the classroom.

It is a full-day program designed for the Grade 4 curriculum to help young people:

- Learn about the Battle River Watershed
- Discover what happens onsite to waste water and solid waste in their community
- Learn how their drinking water is treated
- Understand how to take action on water conservation and waste reduction

This program is modelled after the WOW Camrose program, which has been offered to hundreds of students since 2016.

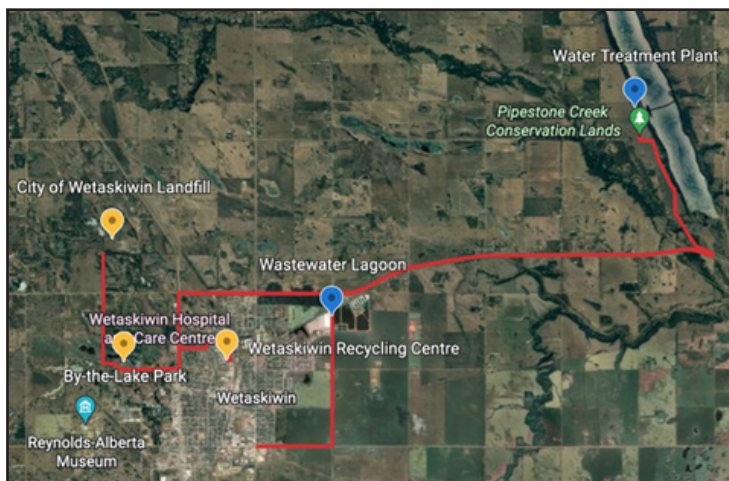
#### SCHEDULE: Snapshot of the day

8:45 am - Bus Departs from the School

Stops on the Tour:

- 1 - Wastewater Treatment Facility
- 2 - Water Treatment Plant, Coal Lake
- 3 - By-The-Lake-Park
- 4 - Landfill
- 5 - Recycling Centre

2:30 pm - Bus Returns to the School with an optional schoolyard activity



#### ORGANIZE A CLASS TRIP

- Tours available annually in April, May, September and October, regardless of weather
- Spots subject to availability (book well in advance)
- Busing fees may be covered on request
- To find out more, go to: [www.battleriverwatershed.ca/youth-programs/waste-tour/](http://www.battleriverwatershed.ca/youth-programs/waste-tour/)

## DETAILS: Site stops & relevant themes

### STOP 1



#### **Liquid Waste:** Wastewater Treatment Facility

Operators will share information about wastewater treatment, how the facility started as a lagoon system, and about the upgrades initiated in 2019.

##### Topics & Themes

- How the water is treated
- Where treated wastewater is released
- Downstream communities connected by the Battle River

#### **Source Water:** Wetaskiwin Water Treatment Plant, Coal Lake

The bus will proceed to Coal Lake to tour the water treatment plant and learn where City of Wetaskiwin residents and businesses get their drinking water.

##### Topics & Themes

- How drinking water is treated
- Testing, potential risks, and precautions
- Climate change and water shortages



### STOP 2



### STOP 3

#### **Lunch, Green Spaces, and Stormwater:** By-the-Lake Park

Learn about storm water movement, how nature recycles its nutrients, what is (and isn't) biodegradable and how the city is using plants and green infrastructure to maintain a healthy shoreline and protect water quality in the Lake.

##### Topics & Themes

- How natural spaces contribute to clean water
- How stormwater moves through the landscape
- How green spaces support biodiversity

#### **Solid Waste:** Landfill & Recycling Center

The City of Wetaskiwin Landfill informs students about disposal options and ways of diverting items from the landfill for reuse.

Recycling reduces the amount of waste entering the landfill and the amount of 'raw' materials needed to manufacture goods. However, recycling still uses a lot of energy and is considered the "3rd R" after Reduce and Reuse.

##### Topics & Themes

- What can and can't be recycled
- Impacts & issues with landfill waste
- Lifecycle of a landfill



### STOP 4 & 5

Special thanks to our Program Funders: Cargill and CAF America.

