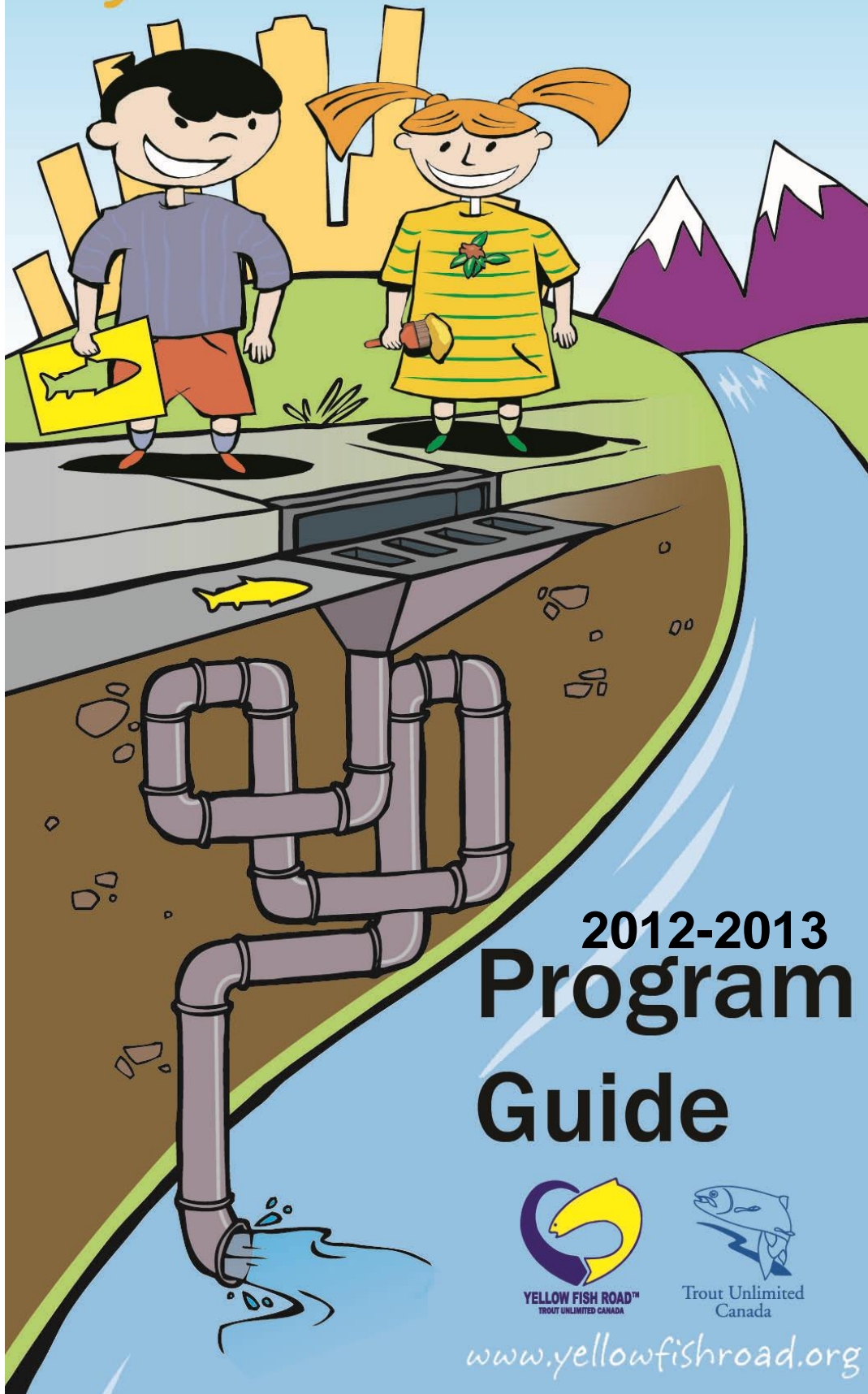


Trout Unlimited Canada's
Yellow Fish Road™
program



2012-2013
**Program
Guide**



YELLOW FISH ROAD™
TROUT UNLIMITED CANADA



**Trout Unlimited
Canada**

www.yellowfishroad.org

Table of Contents

Sponsor acknowledgments.....	3
What is Yellow Fish Road?.....	4, 5
Getting Started.....	5
Yellow Fish Road Supplies.....	7
Painting Procedures.....	8, 9
Distributing Fish Hangers.....	10, 11
Volunteer Agreement guidelines.....	12
Volunteer Agreement Form.....	13
Stencilling Record Sheet.....	14



Thank You!

The **Yellow Fish Road™** program benefits from the generous support of many volunteers, corporations and funding agencies. Trout Unlimited Canada is grateful for the contributions from TD Friends of the Environment and the RBC Blue Water Project nationally.

Funding Partners:



What is the Yellow Fish Road™?

Trout Unlimited Canada's **Yellow Fish Road™** program educates the public about the impacts of pollution entering urban **storm drains**. In most communities, water entering **storm drains** goes directly into local rivers, streams and lakes untreated. **Storm drain pollution** can harm fish and wildlife, as well as reduce water quality for human use.

Yellow Fish Road™ volunteers paint "yellow fish" symbols and the words, 'Rainwater Only' beside storm drains and distribute fish-shaped brochures to nearby households. These activities remind people to properly use and safely dispose of hazardous household chemicals, rather than allowing these to enter curb side storm drains.

Trout Unlimited Canada (TUC) introduced the **Yellow Fish Road™** program in 1991. To date, over 220 communities across Canada have approved or implemented this unique and important water quality initiative.

Why the Yellow Fish Road™?

Non-point source pollution is pollution spread over a large area and not from one specific location or source; this type of pollution is hard to trace to its source (e.g. garbage, dirt, oil, gravel, salt, animal droppings, fertilizers, pesticides, etc.). Point source pollution is easily traced to its source (e.g. factories and sewage treatment plant wastewater).



What is a Storm Drain?

Storm drains (catch basins) are the grates found on roads by the curb. **Storm water** runoff goes into the grates, through a network of underground pipes, out as **storm water outfall** and into the local water body.

Don't confuse **storm drains** with **manholes**! Manholes are not necessarily part of the sewage system – they could be access points to underground cables, pipes and other structures.



What is a Watershed?

A watershed includes the area of land in which all water drains to a common point. All streams, groundwater, and runoff go to the same drainage point (e.g. a river or a lake).

There are five National Watersheds in Canada, which Watershed do you live in?
www.canadiangeographic.ca/watersheds/map/?path=english/watersheds-list

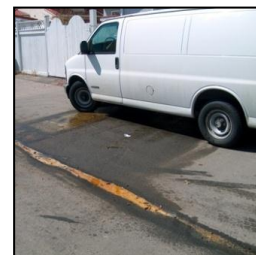
Non-point Source Pollution is the single largest contributor to water pollution!

As rainfall or snowmelt moves over and through the ground, it picks up and carries away natural and human-made substances (chemicals, sediment and debris), depositing them into lakes, rivers, wetlands, coastal waters and underground sources of drinking water.

Pollutants do not enter a local river, lake, or stream through the storm drain system at a constant rate over the year. There is a large increase in non-point source pollution in the springtime. This is peak time for runoff from snowmelt and rain which ends up in the storm drain system, untreated.

Where do these pollutants come from?

There are many sources of water pollutants, including recreational, residential, industrial and agricultural sources. However, Canadian households annually generate more than **60,000 tonnes** of hazardous wastes. Common examples of hazardous household wastes include: old car batteries, lighter fluid, turpentine, paint, gasoline, used motor oil, antifreeze, pool chemicals and pesticides. Other pollutants that commonly end up in the water system are soap and fertilizer. These may not be toxic, but in high concentrations they can have a negative impact on the aquatic ecosystem.



Since about 70% of towns and cities are paved or built over, about half of the precipitation that falls on our cities never touches the soil. Water slowly moving through soil (groundwater) naturally gets filtered. Water running over pavement collects debris and chemicals and goes directly into the storm drain system.

What are the effects of non-point source pollution?



Non-point source pollution in our waterways impacts not only humans but the animals and plants that depend on that water. It can affect the food chain and is the major source of human exposure to persistent toxic chemicals. Aquatic life can become negatively altered or destroyed when exposed to hazardous waste; this is especially true with fish and wildlife.

*It only takes **1 drop** of motor oil to make **25 litres** of water undrinkable!*

The water in your watershed continues on to the next community's watershed. Municipal water is treated before reaching households. If the water going into the treatment plant is contaminated, it takes more time, energy and costs more to clean it.

What Can I Do?

- ✓ Painting storm drains and distributing the fish-shaped door hangers with the *Yellow Fish Road™* program in your community, informs residents that anything that goes into the storm water system goes directly into the local waterbody. By educating communities about proper disposal of household hazardous wastes, we can reduce our impact on the aquatic ecosystem and ensure safe drinking water supplies for all living things.



How to Get Started

Who to Contact

You are required to get proper approvals for implementing the *Yellow Fish Road™* in your area. Read below to see who to contact in your area.

1. **Yellow Fish Road™ Partner:** See www.yellowfishroad.org to see if there is a partner near you to help plan a painting date and book a painting kit - partners already have permission to paint in their municipalities. They may also offer educational workshops to your class or community group.
2. **Yellow Fish Road Calgary and Area:** If you live in the Calgary area, we can provide stencilling kits, and free classroom and community group presentations. Contact us for more details yellowfish@yellowfishroad.org.
3. **Non-Partner Municipalities** (town office or city hall): If you are not near a **Yellow Fish Road™ Partner**, then you need to get permission to paint in your area and learn of any restrictions for painting (e.g. supplies required, construction, and street cleaning). It is a good idea to get the permission in writing, to carry with you during the painting.

The following is a suggested list of permissions outside of municipalities that may also apply to the storm drains in the area you intend to mark:

- ☒ Private approval (e.g. subdivision developers, condominium association)
- ☒ Facilities and land within any Canadian national park, provincial park, conservation area or national historic site
- ☒ Facilities or land owned/leased by the Department of National Defence
- ☒ Facilities or land owned/leased by First Nations

Trout Unlimited Canada Volunteer Agreement

For insurance and liability purposes, Trout Unlimited Canada (TUC) requires a volunteer agreement to be signed and returned by the group leader **prior** to picking up the stencil kits (or before we approve your program and send 2 stencils and **200** door hangers). Please ensure that you send this form to us or your local **Yellow Fish Road™ Partner**. The form is on page 14 of this guide.

Only those groups that have returned this form and have followed to the procedures outlined in this Program Guide will be covered by TUC's liability insurance in the unlikely event of accidental incidents.



Where to Paint

- Decide on which area you are concerned with and the streets you would like to cover (one street block normally has 2 – 4 storm drains). Don't forget to go out and check to see if this area has been recently painted already.
- Stay away from busy, high traffic roadways, and private property.

Who to Involve

- This program is available for people of all ages. We require a **1 adult leader** for every **6 children** per group.
- Involve your community, as this program benefits everyone! Local businesses may be willing to assist with a wrap-up lunch or BBQ for the volunteers after they have finished their painting. This is a great time to get local personalities involved.
- Don't forget to contact your local media as well. If you do get local media coverage, please send us copies – we like to feature these on our website.

Where to Get Supplies



Trout Unlimited Canada can send 2 stencils and **200** fish door hangers if you are **not** near a **Yellow Fish Road™ Partner**. You will be responsible for supplying the rest of the required items for painting day (see *Yellow Fish Road™ Supplies*, p. 7).

Many local hardware stores are willing to donate paint, rollers and garbage bags.

Municipalities may be willing to loan safety vests and goggles, pylons and work gloves. Ask when you contact the municipality for permission to paint.

Yellow Fish Road™ Supplies

For safety reasons it is important to have **all** of the items listed below for **every** group of approximately 6 children and 1 adult leader. Requirements may vary from municipality to municipality. If you are working with the Calgary TUC office or a Yellow Fish Road™ Partner, they will loan you a complete stencil kit. If not, check with the municipality (when you phone to get permission to paint) to see if the following supplies are sufficient. They may also loan the safety equipment to you.

Yellow Fish Road™ Paint Kit Contents:

- | |
|---|
| <input type="checkbox"/> Carrying Caddy (1) |
| <input type="checkbox"/> Clipboard (1) (Painting Permit, Painting Record and Instructions, and map, if using) |
| <input type="checkbox"/> Pen/Pencil (1) |
| <input type="checkbox"/> Pylons (2) (to put on the road 1.5m from the drain) |
| <input type="checkbox"/> Safety Vest (2) (to wear while watching for traffic in the traffic safety zone) |
| <input type="checkbox"/> Work Gloves (2 pairs) (to protect hands while cleaning the storm drain area and painting) |
| <input type="checkbox"/> 1 Broom and Dustpan (to clean the area around the storm drain before painting) |
| <input type="checkbox"/> Garbage Bag (1) (to collect garbage and debris around storm drain for disposal at the end of the day) |
| <input type="checkbox"/> Paint (1 squeezable bottle) – Yellow Outdoor Latex Paint |
| <input type="checkbox"/> Paint Roller (1) or Paint Brush (1 large) |
| <input type="checkbox"/> Plastic Locking Bag (1) (keep the wet paint roller and brush(es) in this while transporting the kit) |
| <input type="checkbox"/> Reusable Fish Stencil (1) * |
| <input type="checkbox"/> Fish Hangers (~50) * |

**Trout Unlimited Canada may provide these materials if you are not near a Yellow Fish Road™ Partner.*

Get Ready to Paint!

1. **Sign and return the Trout Unlimited Canada Volunteer Agreement** – If you are picking up kits in Calgary **email or call at least 10 days before you need the stencilling kit**. If we are mailing you door hangers and stencils, the Volunteer Agreement must be submitted at least 14 days prior to your painting day.
2. **Organize groups** of about **6 children** and **at least 1 adult** (or whatever minimum number of adults, per 6 children, is required for your organization). Please ensure those children working on the street are wearing safety vests and pylons are set out according to safety standards in your area.
3. **Emergencies:** Adult leaders should have an emergency first aid kit (cell phones or radios are also a good idea) and select a meeting spot for after the painting (or lost children).
4. **Storm Drain and Fish Hanger Tally sheets:** If you are not working with a *Yellow Fish Road™ Partner*, make copies, 1 for every group. You may also wish to copy the **instructions** for each group and **street maps** of the area you are painting.
5. Please rinse off any paint on the materials (paint rollers, brushes and stormdrain stencils) in a sink, then dry and return them to the kit.

Get involved!



Adopt a Trout – Help TUC in their efforts to conserve, protect and restore Canada's rivers and streams through the 'Adopt a Trout' program. Learn about our TUC mascot, 'Takoda' and adopt one of his trout friends. Your adoption of \$35.00 provides numerous benefits including;

- ✓ Your own 7" plush toy complete with unique 'T-Bar' identification tag
- ✓ An official adoption certificate,
- ✓ A trout fact sheet
- ✓ One year membership to 'Smolt School',
- ✓ 'Get schooled' newsletters with stories, creature features, contests and much more!

Through education and research Takoda's TUC friends can help ensure all of Canada's coldwater rivers and streams are safe like Takoda's home.



Storm Drain Stencilling: Here's How!

Painting Procedures

Safety requirements will vary – double-check with your **Yellow Fish Road™ Partner** or your municipality, to ensure that the following instructions are appropriate.

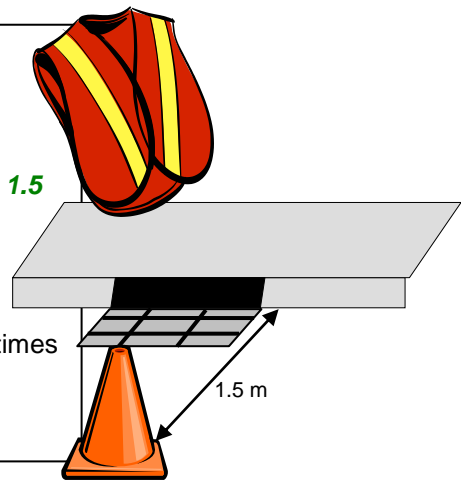
We recommend starting at the **furthest** storm drain and working your way back to the meeting spot (**do not zigzag** up the street – cross when one entire side of the street is completed and work your way back up the other side). Remind everyone that it is better to do the painting *well* rather than *fast*!

Get into **groups** of about **6** (two painters, 2 safety people and 2 fish hanger people) and **at least 1 adult** supervising. Rotate the following duties – while one part of the group is dropping off the fish hangers, the others will follow the painting procedures below.

1 SET UP THE SAFETY ZONE

- **Safety People:** 2 people need to put on **safety vests**. *Because moving vehicles may drive by, this job is very important!*
- **Adult:** When it is safe to do so, place the **pylon** on the road, about **1.5 m** from the storm drain. *When the safety zone is in place, Safety People can step onto the road.*
- Standing near the pylon (*in between the pylon and the sidewalk*),

The **Safety People** should **watch both directions of traffic** at all times and ensure that everyone remains within the safety zone.



Do not paint next to these!

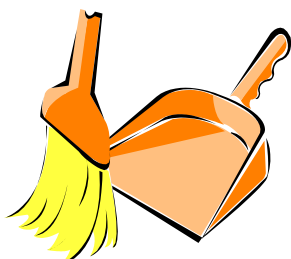
2 CLEAR THE STORM DRAIN AREA

- **Painters:** 2 people need to put on **work gloves**.
- Pick up any debris on or near the storm drain (e.g. leaves, grass and paper) and put it in the **garbage bag**.
- Ask for adult help for dangerous items (e.g. glass and other sharp objects).

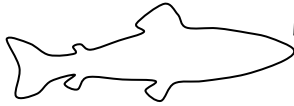


3 CLEAN THE AREA TO BE PAINTED

- Pick a spot within **30 cm** to the right or left of the storm drain, on the smoothest area, for painting.
- Clean the area with the **broom** and **dustpan**. **Do a good job**, as paint can stick to the dirt, not the road, and will wash away into the storm drain!



RAINWATER ONLY



4

HOLD THE STENCIL

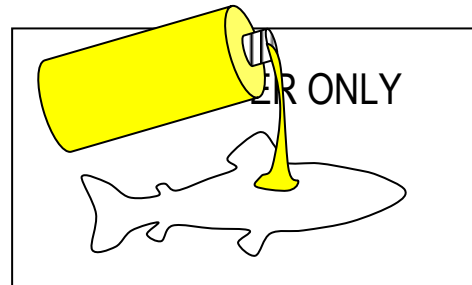
- Put the **stencil** on the cleaned surface (so that you can read it **from the sidewalk**).
- One painter holds the stencil while the other paints.

Sidewalk on this side!

5

POUR SOME PAINT

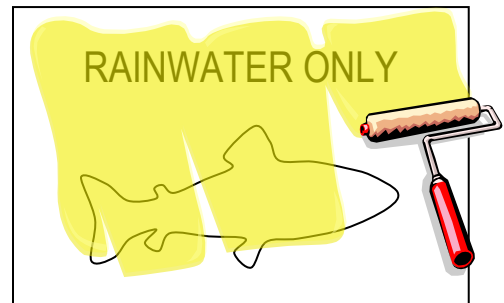
- Carefully squeeze or pour a **small** amount of paint, about the **size of a loonie (\$1)** inside the **fish stencil**.
- Add a little more when you need it. **Using too much paint will smudge the lettering!**



6

PAINT!

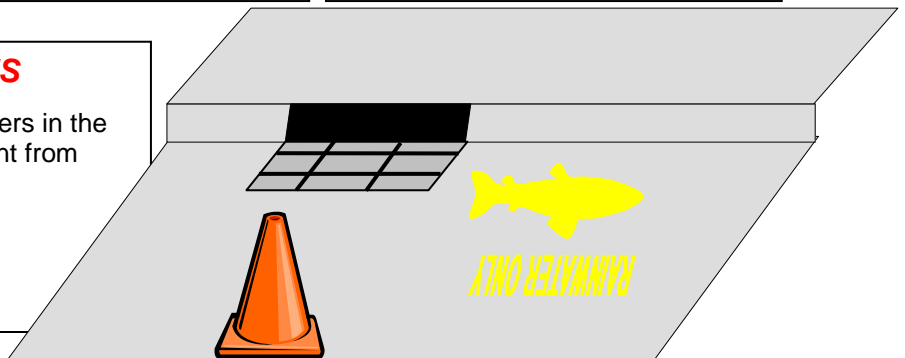
- Paint over the whole stencil. **Press the roller down firmly** – this will help to keep the outline of the symbol sharp and clear. Make sure the surface you are painting on is as smooth as possible. Sometimes the top of the curb is the best place to paint.



7

COLLECT ALL OF THE SUPPLIES

- Pick up all supplies and place paint rollers in the **plastic locking bag** to prevent the paint from hardening on the brush.



8

FILL OUT THE Drain and Fish Hanger Tally Sheet

- Keep a **tally of the painted storm drains** and record the **types of garbage** found.
- Mark the painted drain on your map (if using maps).



Distributing "Fish Door Hangers"

While the others are painting, one adult (if there is a second adult) and **two** group members will take the *fish-shaped door hangers* and distribute them to each house along the painting route.

1 WHERE DO I GO?

- Stay within sight of your adult supervisor!
- Stay on the same block as the painting crew.
- Go to the door in teams of 2
- If you think the house is unsafe for ANY REASON do not put a hanger there.

2 HANG THE FISH HANGERS

- Place fish hangers (in order of preference):
 - In the mailbox
 - On the doorknob
 - Inserted firmly in the screen door of the house.
- Ensure that the hangers are **secure** and **will not end up as litter** on the street!



3 FILL OUT THE DRAIN and HANGER TALLY SHEET

- Tally the **number of fish door hangers** you distribute.
- Remember to tally these for **each street** you cover.

This is extremely important!



Cleaning Up

- Rinse off any paint on the materials, dry and return them to the kit.
- Please do not throw away the kit supplies as these can be used by the next group.
- Don't forget to give your group leader the Storm Drain & Fish Door Hanger Tally sheets.
- If you have borrowed a kit from a Yellow Fish Road™ Partner, you will need to return all the supplies in good order.

Encountering Opposition

1. Stay calm.
2. Notify the concerned citizen that you have received permission from the municipality to conduct the program, and show the permission letter.
3. Explain what the *Yellow Fish Road™* program is about.
4. Ask them to call Trout Unlimited Canada's **1-800-909-6040** toll-free number with their concerns, or give them the contact information of the Yellow Fish Road™ Partner. In Calgary they can call 403-209-5181.
5. If the person is persistent, apologize for the inconvenience and move on. Make a note of it on your Drain and Fish Hanger Tally sheet.

Tracking Your Progress

Trout Unlimited Canada is keeping track of all the drains painted in Canada so please keep track of the number of storm drains you paint and the community you paint in. This kind of information can be used by Trout Unlimited Canada to determine the impact and size of the program and coordinate groups working within the region.

In addition, the **Storm Drain & Fish Door Hanger Tally** sheets provide important statistics and feedback, and help us to keep getting support for this water quality initiative. Please forward the Storm Drain & Fish Hanger Tally sheets as soon as possible.

Submit Statistics and Return Your Kit

Log onto www.yellowfishroad.org Click on the 'Enter Data' tab at the top of the page and complete the information required.



- Drop off your clean painting kits if you borrowed them from a *Yellow Fish Road™ Partner*.
- Thanks for taking action to protect our waters!



Volunteer Agreement

Trout Unlimited Canada requires that the Group Leader or key contact sign the following Trout Unlimited Canada Volunteer Agreement (see page 13), **prior** to implementing the Yellow Fish Road™ program. **If we are shipping supplies to you we must receive your Volunteer Agreement 14 days prior to your stencilling event.**

You are responsible for following the procedures outlined in this guide and supervising your group. As volunteers for Trout Unlimited Canada's Yellow Fish Road™ Program, your group will be covered by Trout Unlimited Canada's general liability insurance for the date(s) of the storm drain marking.

If your group is driving to the painting location, ensure that all drivers have adequate insurance and parents have given written consent for their children to be driven by volunteer drivers. This is your group's responsibility, not that of Trout Unlimited Canada.

We also ask that all statistics be submitted either to your *Yellow Fish Road™ Partner* or to Trout Unlimited Canada directly, using the form on the Enter Data page of the *Yellow Fish Road™* website. We need these numbers to keep this valuable program going.

Please complete the form on the following page and return it (via email, fax or mail) to our office or to your **Yellow Fish Road™ Partner** before your painting day.

Yellow Fish Road™
c/o Trout Unlimited Canada
160-6712 Fisher Street SE
Calgary, Alberta T2H 2G9
Toll-free: (800) 909-6040 (ext. 181)
Phone: (403) 209-5181
Fax: (403) 221-8368
Email: yellowfish@yellowfishroad.org or
lrobb@tucanada.org

For *Yellow Fish Road™ Partner* contact information, see www.yellowfishroad.org.

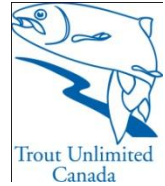




Trout Unlimited Canada

Volunteer Agreement for

The *Yellow Fish Road*™ Program



We understand, as volunteers for Trout Unlimited Canada's Yellow Fish Road™ (YFR) Program, it is the responsibility of our group to:

1. Designate a group leader to read the YFR Program Guide and be responsible for the group while implementing the YFR Program.
2. Obtain the necessary supplies and permissions, as outlined in the YFR Program Guide, whether through a YFR Partner, or through our own means.
3. Ensure group members understand and follow the safety and painting procedures outlined in the YFR Program Guide (or by a YFR Partner or the municipality).
4. Ensure the group is supervised at all times while marking the storm drains.
5. Ensure that any group members under the age of majority have written parental consent to participate; and ensure that parents understand that the group leader, not Trout Unlimited Canada, will be supervising the painting.
6. Ensure a minimum of 1:6 adult to child ratio for the marking.

As volunteers for Trout Unlimited Canada's Yellow Fish Road™ Program, your group will be covered by Trout Unlimited Canada's commercial general liability insurance subject to the policy coverage, exclusions, and conditions for the date(s) of the storm drain marking. Such coverage will only apply while the volunteers are performing authorized duties. Trout Unlimited Canada is not responsible for bodily injury incurred or damage to or loss of personal property incurred while implementing the Yellow Fish Road™ Program.

I have read, understood and agree with this Volunteer Agreement **(please fax this page to 403-221-8368, or directly to your YFR partner)**. If we are shipping supplies to you we **must receive your Volunteer Agreement 14 days prior to your stencilling event**.

Signature:	
Name (Please Print):	Today's Date:
School/Group/Organization Name:	
FULL Mailing Address:	
Phone Number:	
Email Address:	
Date(s) of Yellow Fish Road™ program painting:	
Estimated # Child Participants:	Estimated # Storm Drains/Doorhangers:
Estimated # Adult Participants:	Estimated # Houses:





Stencilling Record

Drain and Fish Hanger Tally Sheet

General Information:

School/Group:	
Teacher/Group Leader Name:	Date:
City/Town:	# Students:
Neighbourhood	# Adults:

Storm Drain and Fish Hanger Tally:

Keep track of the number of storm drains you stencil / fish hangers you distribute for each street.

Name of the Street You Are Painting On?	Storm Drain Tally (# Painted)	Fish Hanger Tally (# Distributed)
Total:		

Litter Check:

Record any unusual litter you find in or around the drain.

Comments:

Let us know if encountered anything else or if you have any ideas or suggestions to improve the program.

