

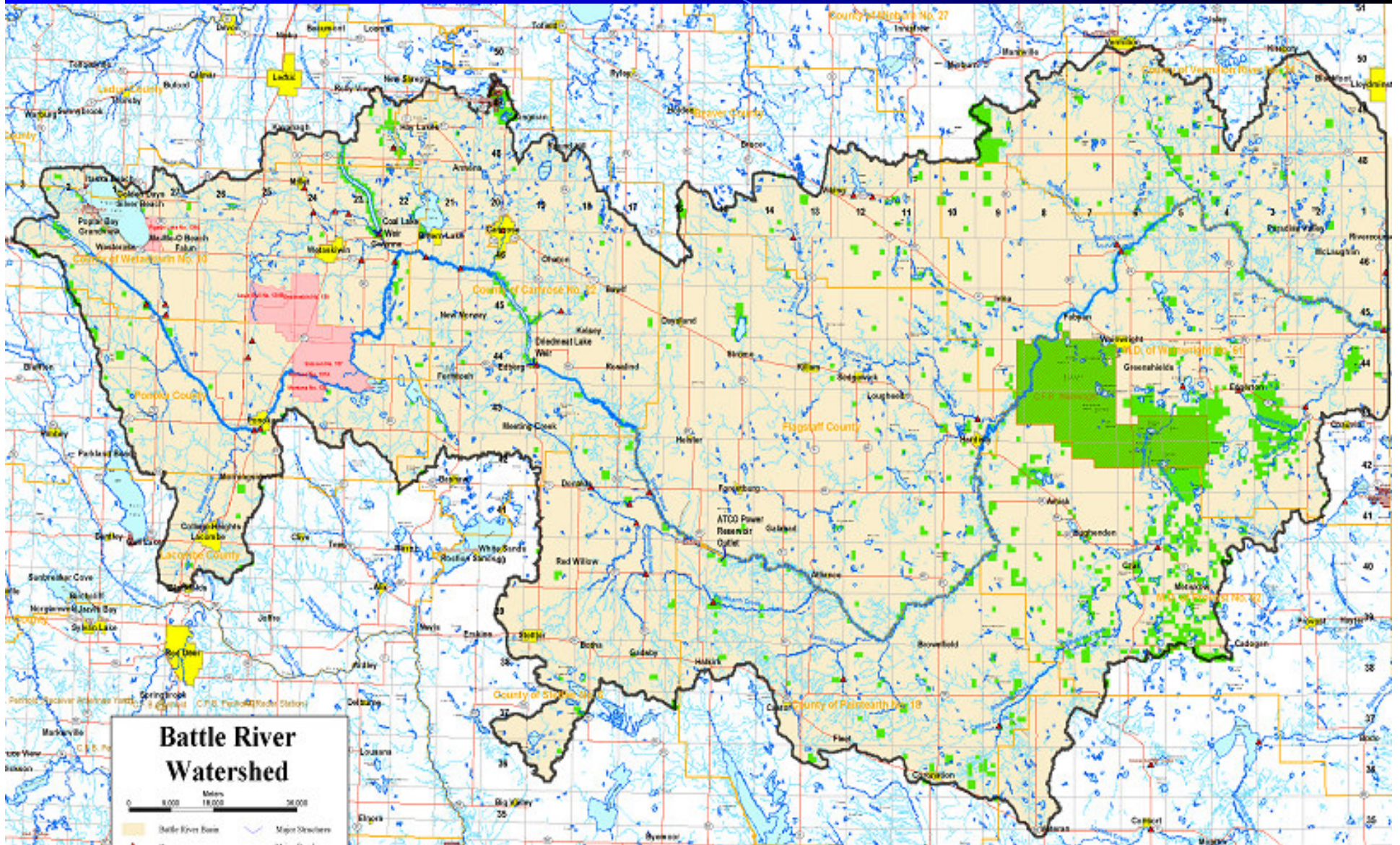
# Public Lands Grazing Leases Along the Battle River

Harry Loonen, Rangeland Agrologist  
Public Lands, Wainwright

# *Public Lands along the Battle River*

- The Battle River flows through an estimated 100 quarters of Public Lands
- Predominantly, but not exclusively used for grazing
- Other uses: recreational, oil & gas, municipal, vacant or natural areas

# Public Lands in Battle River Watershed (in green)



# ***What is a Grazing Lease?***

- Public Lands leased for the purpose of grazing livestock
- Grazing Leases are normally issued for a 10 year term and are renewable
- A lease is described by a land location, acreage and a carrying capacity
- Grazing Leases along the Battle River are predominantly issued to individual operators

# *Requirements of a Lessee*

- Stock within the carrying capacity
- Maintain fences
- Utilize the lease with their own stock
- Practice good range management
- Complete an annual stock return

# ***Public Lands monitoring of Grazing Leases***

- Detailed inventory and range condition inspections are completed before lease renewal
  - Range type and productivity information to set carrying capacity
  - Completion of range health short forms to determine health
  - Management and facility information is collected to assist in maintaining good range condition
  - Completion of riparian health assessments, Agrologists are trained in this area

# *...Public Lands monitoring of Grazing Leases*

- Contact is made with lessees for extension, education, or enforcement purposes
- Periodic inspections are completed, based on:
  - Identified issues or problems
  - Stock return information
  - Complaints
  - Need to integrate other users

# ***Common management regime for Grazing Leases along the Battle R.***

- Grazed in it's state of native range
- Some areas have been cleared and seeded to tame forage
- Almost no cultivation

# ***...Common management regime for Grazing Leases along the Battle R.***

- Grazing regimes:
  - Continuous Grazing: commonly, but not exclusively, early June to early October
  - Rotational or Complementary Grazing: lease is fenced with a number of pastures and/or used with adjacent private lands

# ***Condition of riparian areas of the Battle River through Public Lands***

- My observations are that the riparian health is very similar to that of the private lands
- There is a mix of healthy, properly managed areas, poor condition stretches, and non-grazed areas.