

**Prairie Provinces Water
Board (PPWB)
Apportionment
Agreement**

**Battle River Water Forum #4
June 8, 2005, Hardisty**



Master Agreement on Apportionment

- **1969 Contract between Alberta, Saskatchewan, Manitoba and the Federal Government**
- **Defines how water in eastward flowing rivers should be shared among the three prairie provinces**
- **Key principle - upstream province must pass 50% of the annual natural volume downstream**



Master Agreement on Apportionment

In 1992 agreement amended to include:

- **General statements about groundwater protection**
- **Water quality objectives**



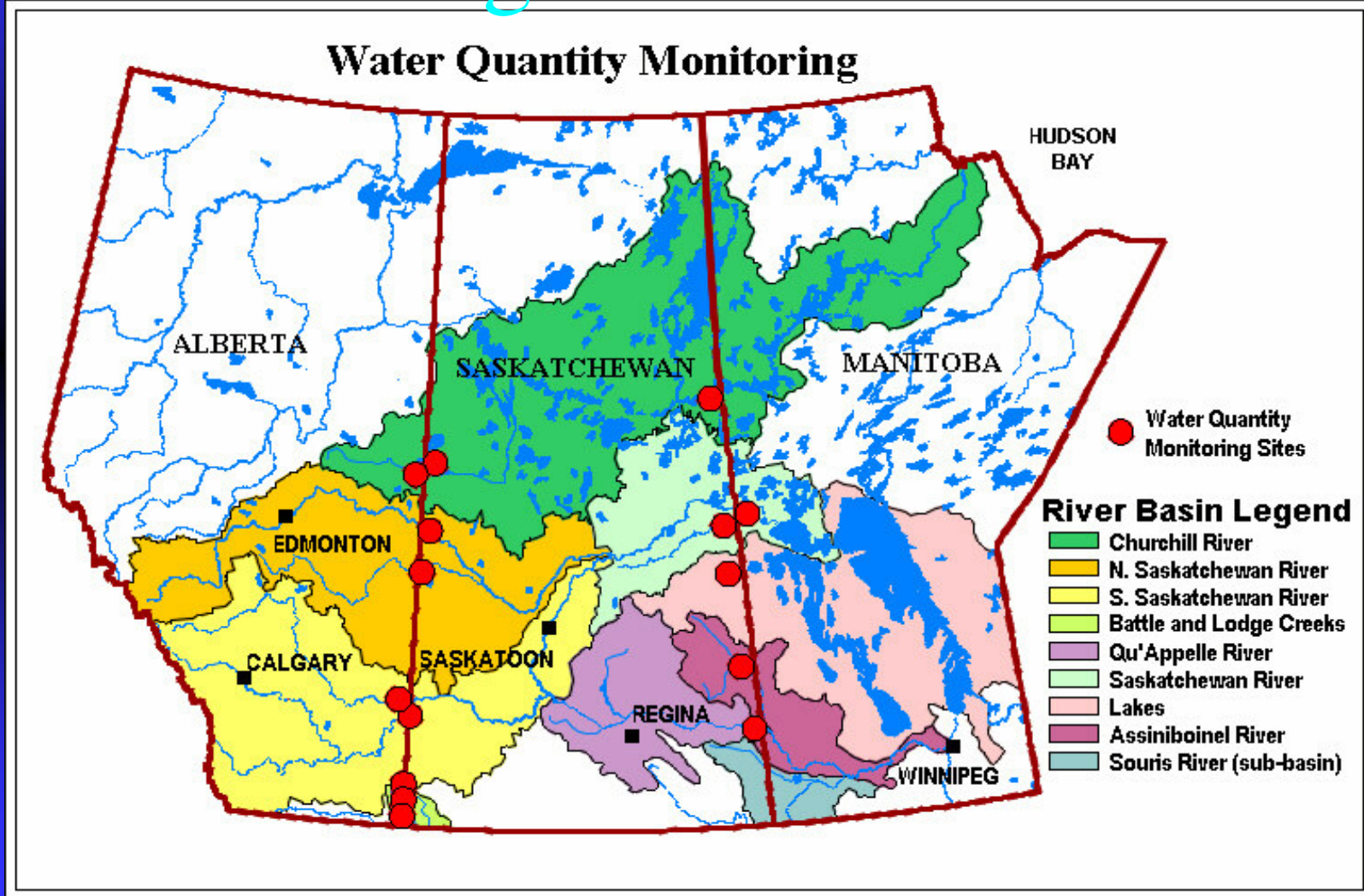
Prairie Provinces Water Board

**Apportionment Agreement
creates the PPWB to:**

- **Administer the agreement**
- **Monitor the flows and water quality**
- **Report compliance with the agreement on an annual basis**



PPWB Water Quantity Monitoring Locations





Battle River

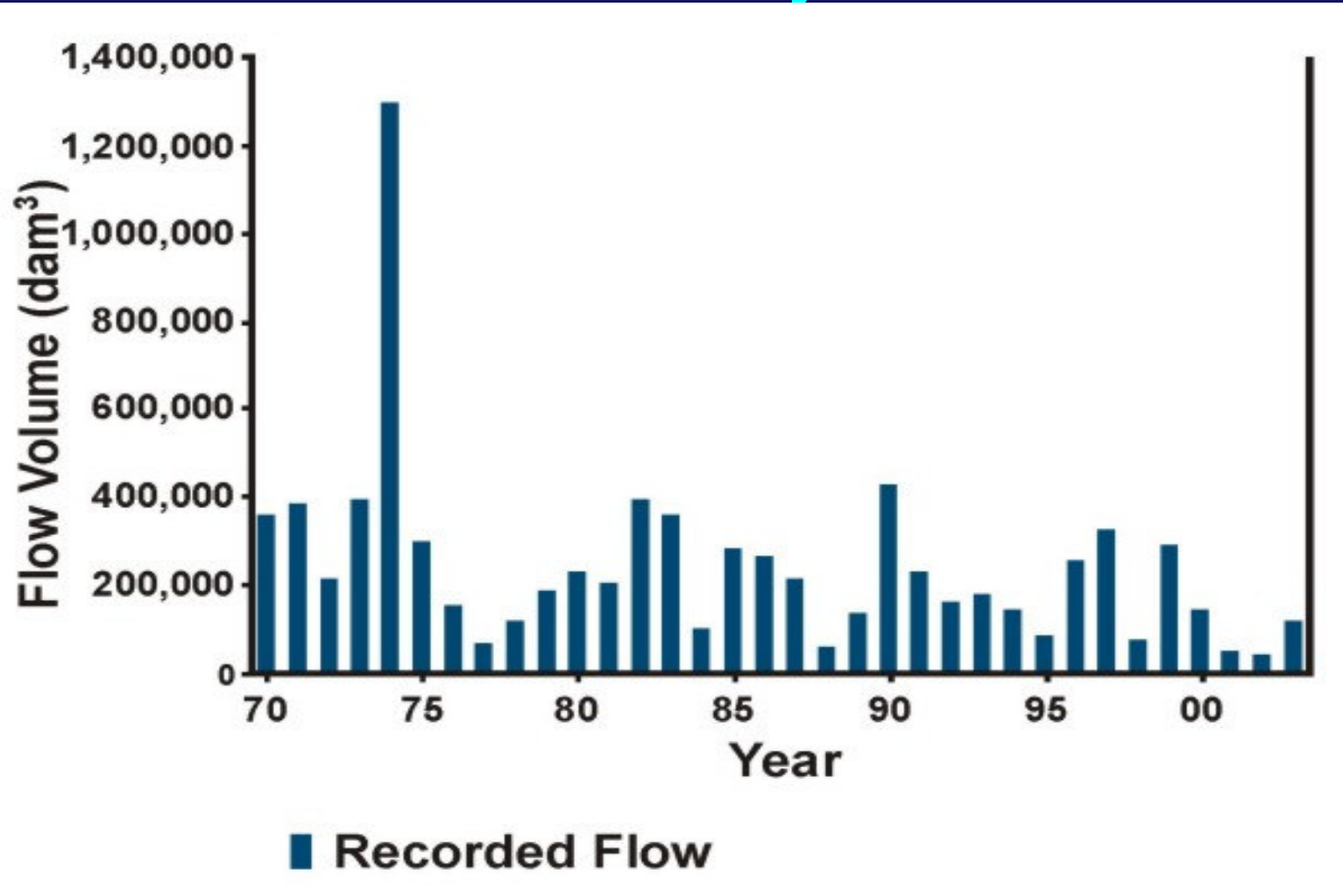
- **Battle River is not specifically mentioned in original agreement**
- **Therefore the Battle River falls under the general 50% principle**
- **Battle River has specific water quality objectives**



Battle River

- **Not monitored in detail as well over 50% of annual volume was consistently passed to Saskatchewan**
- **2004-05 recent low flow years and increased water use in Alberta - PPWB decided to evaluate the Battle River**

Water Quantity Monitoring Site: Battle River near the Saskatchewan Boundary





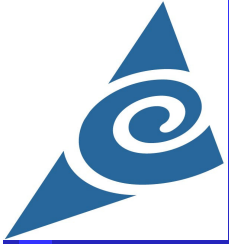
PPWB Battle River Evaluation

- **Determine water use in Alberta**
- **Calculate Natural Flows**
- **Compare Actual Flows to Natural Flows**
- **Compare actual annual volume to natural annual volume**
- **Alberta must pass 50%**



Battle River Evaluation

- **PPWB is responsible for calculating the Natural Flows**
- **Alberta must determine its water use and provide that information to the PPWB**



Natural Flows

- **Natural Flow =**
 - ◆ **Recorded Flows**
 - + (plus)**
 - ◆ **Amount removed from river**
 - (minus)**
 - ◆ **Amount added to river**
(groundwater through municipalities)



Natural Flows

- **Natural Flow data set is needed by the planning process to:**
 - ◆ **Determine the requirements of the aquatic ecosystem**
 - ◆ **Be the base case flow for evaluating water use options**



Battle River Watershed Planning

- **Battle River Plan must:**
 - ◆ **Ensure 50% of annual volume passes from Alberta to Saskatchewan**
 - ◆ **Ensure water quality objectives are met**



Battle River Watershed Planning

- **The Battle River project team will keep the PPWB informed of its progress and evaluations**
- **Sharing information is a core element of the agreement**
- **Prevents disputes and provides early notice (before media)**